



16 13:39

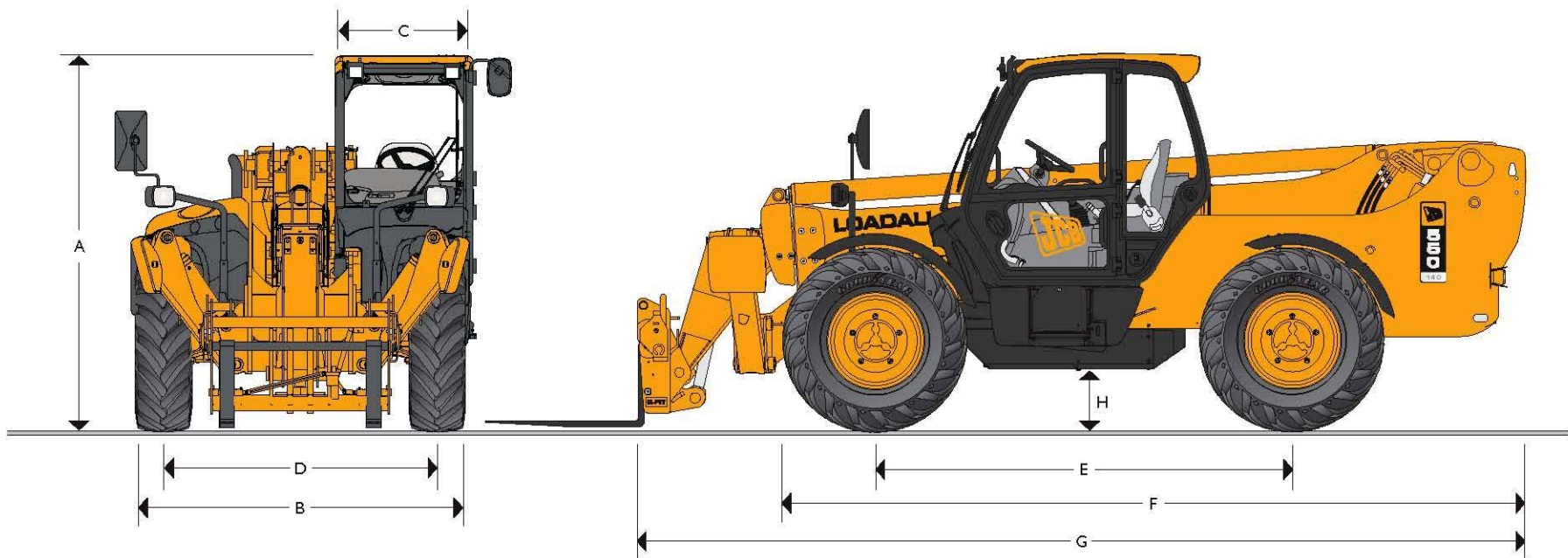




JCB LOADALLS | 550-140



MAX. PAYLOAD: 10000lbs (4535kg)
 MAX. LIFT HEIGHT: 44ft 3in (13.5 meters)



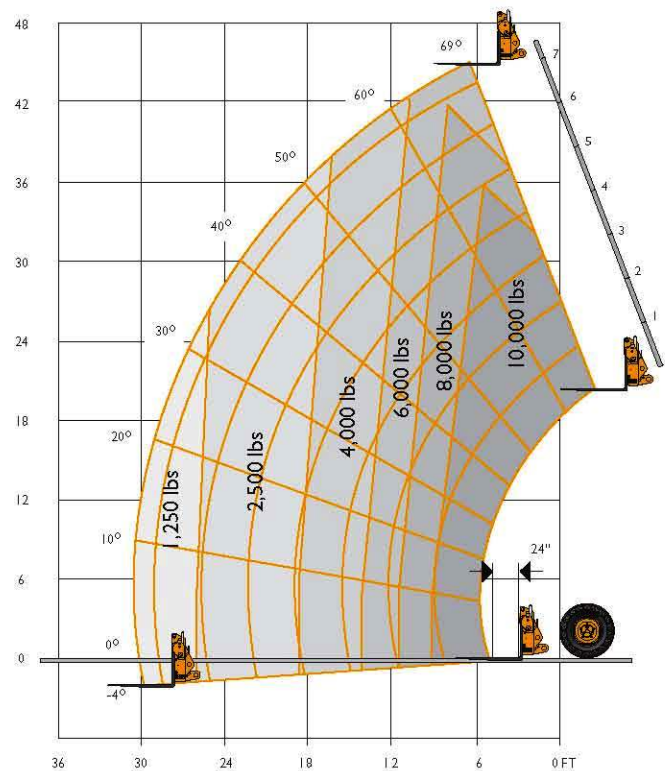
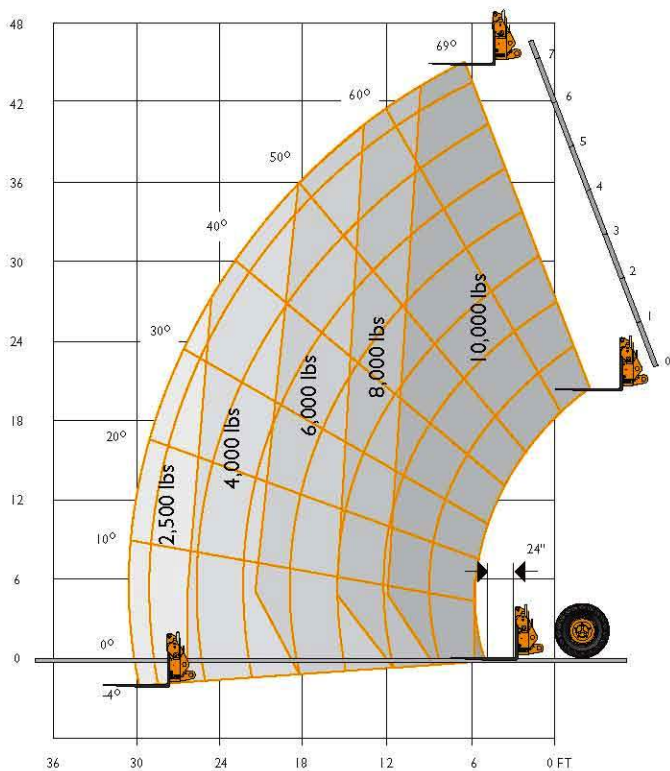
STATIC DIMENSIONS

Machine model	550-140
	ft-in (m)
A Overall height	8-6 (2.59)
B Overall width (over tires)*	7-9 (2.35)
C Inside width of cab	3-1 (0.94)
D Front track	6-3 (1.90)
E Wheelbase	9-6 (2.90)
F Overall length to front tires	17-0 (5.18)

Machine model	550-140
	ft-in (m)
G Overall length to front carriage	20-6 (6.25)
H Ground clearance	1-4 (0.40)
Outside turn radius (over tires)	13-5 (4.10)
Weight	23934 (10858)
Tires	15.5-25

*Dependant upon tire specified.

JCB LOADALLS | 550-140



Chassis Levelling (Sway)
With stabilisers retracted (Sway angle $\pm 9^\circ$)

LIFT PERFORMANCE – 550-140 STABILIZERS DOWN

With Stabilizers Down

Maximum lift capacity	lb (kg)	10000 (4535)
Lift capacity to full height	lb (kg)	10000 (4535)
Lift capacity at full reach	lb (kg)	2500 (1133)
Lift height	ft-in (m)	44-3 (13.50)
Reach at maximum lift height	ft-in (m)	5-6 (1.71)
Maximum forward reach	ft-in (m)	30-8 (9.39)

Complies with stability test ASME B56.6 1992.

LIFT PERFORMANCE – 550-140 STABILIZERS UP

With Stabilizers Up

Maximum lift capacity	lb (kg)	10000 (4535)
Lift capacity to full height	lb (kg)	6000 (2721)
Lift capacity at full reach	lb (kg)	1250 (567)
Lift height	ft-in (m)	44-3 (13.50)
Reach at maximum lift height	ft-in (m)	5-6 (1.71)
Maximum forward reach	ft-in (m)	30-8 (9.39)

Complies with stability test ASME B56.6 1992.



JCB LOADALLS | 531-70, 535-140, 550-140, 550-170



ENGINE - JCB DIESELMAX

Latest technology and advanced design provides low fuel consumption, reduced noise, high torque and power output, total reliability and minimal maintenance.

Two-stage, dry type air filter with primary and safety elements.

Machine Model		531-70	535-140/550-140/550-170
Displacement	in ³ (ltr)	269 (4.4)	269 (4.4)
No. of cylinders		4	4
Aspiration		Naturally aspirated	Turbo
Power rating			
Power @ 2200rpm	HP (kW)	84.5 (63.0)	100 (74.2)
Torque rating			
Torque @ 1200rpm	lbf ft (Nm)	236 (320)	
Torque @ 1300rpm	lbf ft (Nm)		313 (425)

TRANSMISSION

JCB powershift transmission incorporating torque converter, bevel box and a 4 speed powershift gearbox in one resiliently mounted unit.

A combined steering column mounted switch incorporating directional control and 4 forward and 4 reverse powershift gears.

Travel speed 16 mph (25kph), optional 20.5 mph (33kph). For 531-70, 17 mph (28kph), 20 mph (32kph) with 2/4 WD

Front and rear drive axles: JCB epicyclic hub reduction drive/steer axles with Max-Trac torque proportioning differentials. Permanent 4 wheel drive.

BRAKES

Service brakes: Servo-assisted-hydraulically activated, self-adjusting, oil-immersed multi-disc type on front and rear axle.

Parking brake: Hand operated disc brake on output of gearbox.

BOOM AND CARRIAGE

Boom is manufactured from high tensile steel.

Low maintenance, hard wearing pads.

JCB Q-fit self-levelling carriage with lever operated pin locking accepts pallet forks and a wide range of attachments.

One boom end auxiliary hydraulic service fitted as standard.

SAFETY CHECK VALVES

Fitted to carriage tilt, telescopic and boom lift cylinders.

JCB LOADALLS | 531-70, 535-140, 550-140, 550-170



JCB LOADALLS | 531-70, 535-140, 550-140, 550-170



SERVICE CAPACITIES

Machine Model		531-70	535-140/550-140	550-170
Fuel tank	US gal (liters)	39.1 (148)	33 (125)	33 (125)
Hydraulic tank	US gal (liters)	29.9 (113)	34.6 (131)	39.6 (150)
Coolant	US gal (liters)	6.1 (23)	6.1 (23)	6.1 (23)

STEERING

Hydrostatic power steering. (531-70 comes w/ power track rods on both axles)
 Three steer mode options: front wheel steer; all wheel steer; crab steer: operated from in the cab by a selection lever.

OPTIONS AND ACCESSORIES

Options: Front and rear working lights, industrial tires, electrical 2/4WD select, radio kit, air conditioning, air suspension seat, deluxe cab trim, windshield and roof guard.

Attachments: Contact your local dealer for details of the comprehensive range.

ELECTRICS

12 v negative earth. 850 CCA battery. 95 amp alternator. Full road lighting. Reversing light. Direction indicators. Hazard warning. Reverse alarm.

CAB

Quiet safe and comfortable cab conforms to ROPS ISO 3471 and FOPS ISO 3449. Tinted glass all round. Laminated roof screen. Roof bars, front, rear and roof screen wiper/washer and heater/screen defroster. Opening rear window. Audio-visual warning system for coolant temperature, engine oil pressure, air cleaner, battery charge, transmission oil, water in fuel temperature and pressure. Hourmeter and road speed indicator. Engine temperature, fuel gauge and inclinometer.

Adjustable steer column with stalk bar powershift change and forward reverse shuttle. Throttle and brake pedal.

Adjustable suspension seat with adjacent mechanically activated park brake. Includes leveling inclinometer. Safety canopy as above but with side glass and roof glass only (screen wiper and heater/screen defroster not applicable).

HYDRAULICS

Two stage gear pump with suction strainer and filter.		531-170	535-140	550-140	550-170
Operating system pressure	psi (bar)	3550 (241)	3770 (260)	3500 (241)	3770 (260)
Pump flow	US gal/min (ltrs/min)	21.6 (82)	29 (110)	29 (110)	
Hydraulic Cycle Times		Seconds	Seconds	Seconds	Seconds
Boom raise		7.2	9.9	14.2	
Boom lower		5.4	7.6	11.9	
Extend		6.8	22.3	22.3	
Retract		5.0	18.6	18.6	
Bucket dump		3.5	2.2	2.4	4.7
Bucket crowd		2.9	2.9	3.2	5.1
Boom raise and extend					41.8
Boom lower and retract					33

JCB LOADALLS | 531-70, 535-140, 550-140, 550-170



A GLOBAL COMMITMENT TO QUALITY

JCB's total commitment to its products and customers has helped it grow from a one-man business into the World's 5th largest manufacturer of backhoe loaders, crawler excavators, wheeled excavators, telescopic handlers, wheel loaders, dump trucks, rough terrain fork lifts, industrial fork lifts, mini/midi excavators, skid steer loaders and tractors.

By making constant and massive investments in the latest production technology, the JCB factories have become some of the most advanced in the World.

By leading the field in innovative research and design, extensive testing and stringent quality control, JCB machines have become renowned all over the world for performance, value and reliability.

And with a global sales and service network of over 400 distributors and agents, the company exports over 70% of its production to all five continents.

Through setting the standards by which others are judged, JCB has become one of Britain's most impressive success stories.



JCB Headquarters Savannah, 2000 Bamford Blvd., Pooler, GA 31322. Tel: 912.447.2000. Fax: 912.447.2299. www.jcb.com

JCB reserves the right to change design, materials and/or specifications without notice. Specifications are applicable to units sold in the United States and Canada. The JCB logo is a registered trademark of J.C. Bamford Excavators Ltd.

USA 21115-1105

JCB TELESCOPIC HANDLERS | 531-70, 535-140, 550-140, 550-17

Helping You Get
the Job Done!