



TH560B

Tractor Ranch  
Sales & Rentals  
100 Chain Lake Road  
www.tractor-ranch.com

CAT



# TH560B

## Telehandler



## SPECIFICATIONS

### Engine

Engine Model	
Standard	Cat® 3054E*
Optional	Cat® C4.4 ACERT**
Gross Power	
Standard	74.5 kW/100 hp
Optional	92 kW/125 hp
Maximum Torque	
Standard	402 Nm
Optional	496 Nm
Bore	105 mm
Stroke	127 mm
Displacement	4.4 liter

\* Engine meets EU directive 97/68/EC Stage II emission requirements.

\*\* Engine meets EU directive 97/68/EC Stage IIIA emission requirements.

- All engine horsepower (hp) are metric.
- Gross power to ISO 14396
- Maximum power shown is at 2200 rpm
- Maximum torque shown is at 1400 rpm.

### Operating Specifications

Rated Load Capacity	5000 kg
Maximum Lift Height	13 700 mm
Load at Max Height	
Stabilizers Down	4000 kg
Stabilizers Up	2000 kg
Maximum Forward Reach	9200 mm
Load at Max Reach	
Stabilizers Down	1600 kg
Stabilizers Up	800 kg
Top Travel Speed	32 km/h

### Tires

Standard	14-24 PR
----------	----------

### Brakes

Foot Brake	Servo assisted on front axle
Parking Brake	Dry disc on front axle

### Weights

Operating Weight	12 000 kg
------------------	-----------

### Hydraulic System

Maximum System Pressure	250 bar
Maximum Pump Flow	150 liter/min
Auxiliary Hydraulic Supply	60 liter/min
Pump Type	Variable Displacement Load Sensing Axial Piston Pump

### Service Refill Capacities

	liter
Fuel Tank	120
Hydraulic Tank	90

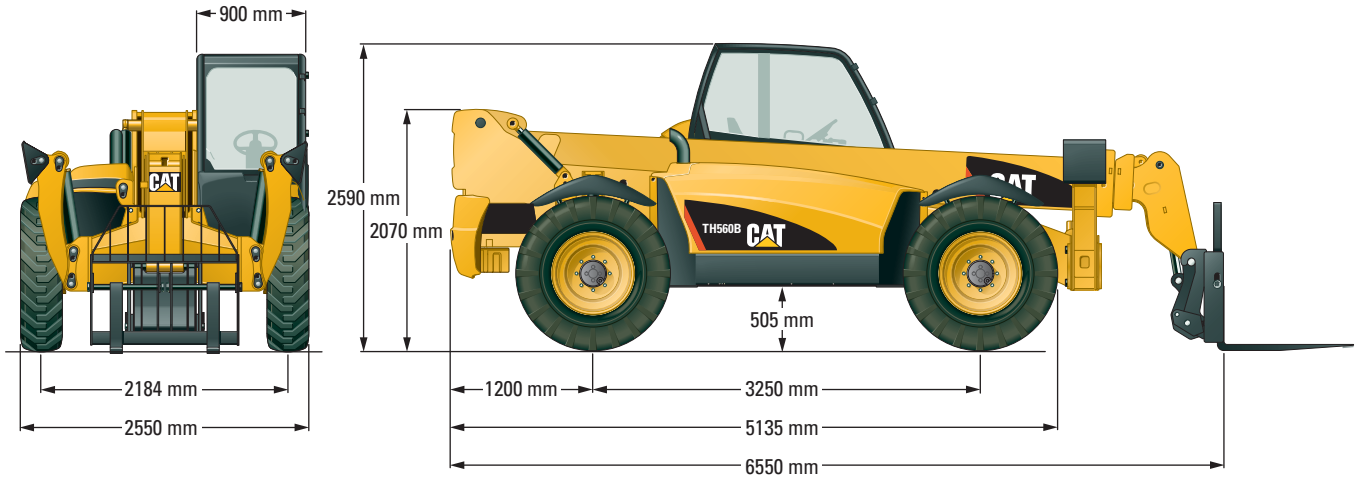
### Transmission Speeds

Forward	km/h
1	6
2	12
3	20
4	32
Reverse	
1	6
2	12
3	20

### Boom Performance

	seconds
Boom Up	16
Boom Down	13
Tele In	12
Tele Out	13
Crowd Forward (dump)	3
Crowd Backward	3
Combined	
Up and Out	27
Down and In	17

Dimensions



Load Chart

