



FUTURE SERVICES

info@future-services.net

CAT

CAT

11000000
110

3000000
3000

11000000
11000

11000000
11000

MANITOU
11000000
11000

CAT







MANITOU
SCANTRUCK

No.

1400L
TURBO

Evoluzione

MANISCOPIC

SCANTRUCK

1400L



MANISCOPIC

MHT 860 L Turbo

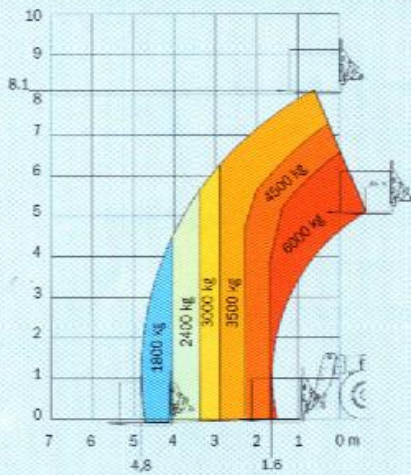


- Capacity : 6000 kg
- Lift height : 8.10 m
- Engine : 132 cv
- 4 wheel steer - 4 wheel drive
- Hydrostatic transmission
- Frame levelling 10°/10°

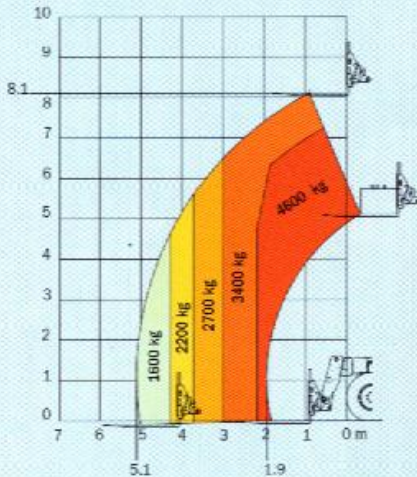
 **MANITOU**

MHT 860 L TURBO

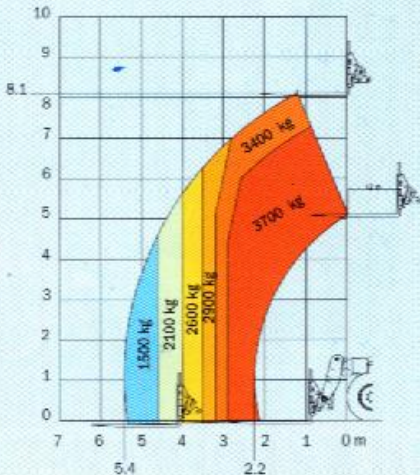
LOAD CENTRE AT 600 MM



LOAD CENTRE AT 900 MM



LOAD CENTRE AT 1200 MM



ENGINE

Diesel PERKINS 1104C-44 TA
 Capacity : 4 cylinders/4400 cm³
 Power (ISO/TR 14396): 132 HP/97 kw
 Rated speed 2200 r.p.m.
 Maximum torque at 1400 r.p.m. : 500 Nm
 Injection directe
 Fan : puller
 Cooling : water
 Anti-polluting standards : EUR2
 Battery : 12 Volts
 Capacity : 120 Ah

LIFT CAPACITY / HEIGHT

Load centre	at 600 mm	at 900 mm	at 1200 mm
Lift capacity :	6000 kg	4600 kg	3700 kg
Capacity at max. height :	3500 kg	3400 kg	3400 kg
Capacity at max. front reach :	1800 kg	1600 kg	1500 kg
Lift height :	8.10 m	8.10 m	8.10 m
Maximum front reach :	4.80 m	5.10 m	5.40 m

TRANSMISSION

Hydrostatic transmission
 Hydrostatic pump with variable flow and continuous speed regulation
 Reversing shift : electro-magnetic
 Differential central : NO
 2 forward and reverse speeds :
 Low speed : 10 km/h
 Fast speed : 32 km/h

HYDRAULICS

Main pump : Piston Load Sensing Haute pression
 Maximum pressure : 275 bar
 Capacity : 140 L/mn

Steering pump

Type : Load Sensing
 Maximum pressure : 170 bar

Drive Type : Proportional hydraulic joystick with 3 movement combination

- 1- Lifting / Crowding
- 2- Boom extension / Attachment
- 3- Lifting / Boom extension

AXLES

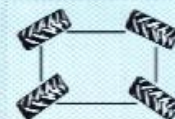
HURTH "Heavy Duty", oil bath with epicycloïdal reduction with 4 satellites Integrated steering cylinders with double action in high position

Frame levelling 10°/10° on front axle

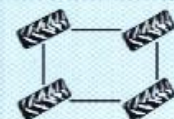
3 steering modes:



2 wheel steering

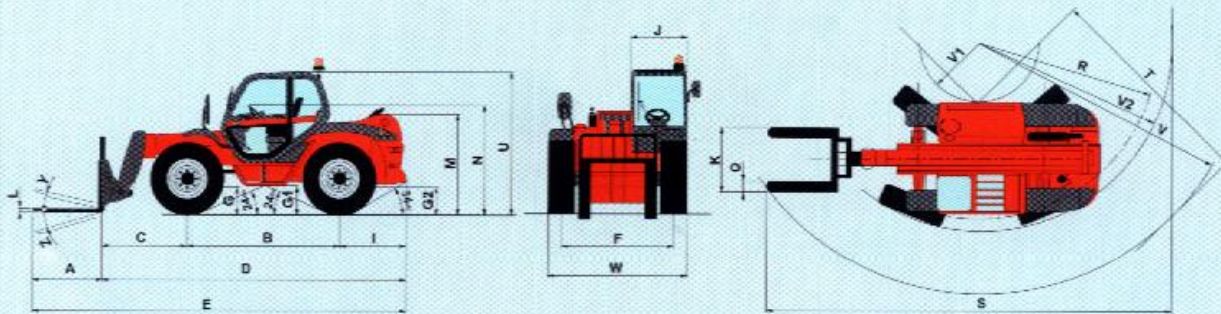


4 wheel steering



Crabsteer

DIAGRAMS



A	B	C	D	E	F	G	G1	G2	I	J	K	L	M	O	R	S	T	U	V	V1	V2	W	Y	Z
1200	2730	1540	5365	6565	1930	465	500	465	1095	865	1750	60	1725	200	3550	7950	4050	2450	4850	1130	3750	2400	11°	125°

BRAKES

Type : oil bath multidisc
 Drive type : hydraulic
 On axle : front + rear
 Parking brake on front axles :
 Oil bath multidisc negative parking brake.

CAPACITIES

Cooling circuit : 15 L
 Engine oil : 8.1 L
 Equipment hydraulic oil : 120 L
 Fuel tank : 118 L

TYRES

Model : 18 - 22.5 16 PR
 Pressure : 5 bar
 Drawbar pull : 11200 daN

LIFTING/TELESCOPING MOTIONS

Unladen lifting : 9.8 sec
 Unladen lowering : 7.8 sec
 Unladen extending internal telescope : 11.3 sec
 Unladen retracting internal telescope : 6.7 sec

FORKS

Dimensions : 200 x 60 x 1200 mm
 Weight of forks carriage : 780 kg

WEIGHT

Total weight without equipment : 10735 kg
 Total weight with equipment : 11515 kg
 Total weight laden with forks : 17515 kg
Load on axle with standard equipment (unladen)
 On front axle, boom retracted : 4500 kg
 On rear axle, boom retracted : 7015 kg
Load on axle with standard equipment (laden)
 On front axle, boom retracted : 15695 kg
 On rear axle, boom retracted : 1820 kg

STANDARD EQUIPMENTS

- ROPS-FOPS cabin
- GRAMMER seat
- Front and rear wipers
- Driving lights
- Rotating beacon
- Left rearview mirror
- Safety device with automatic lock of aggravating movements
- Safety valves on cylinders
- Heating

OPTIONS

- Air conditioning
- Comfort seat
- Roof wipers
- Cabin rearview mirror
- Tyres 445/70 R24

MHT 860 L TURBO

**Manitou rough-terrain telescopic handler (10 K)
MHT 860 L Turbo**



Operators, parts
and service
manual in
English



4 Wheel Drive



First aid kit and
Fire extinguisher



Air condition

**Manitou rough-terrain telescopic handler (13K)
MHT860**

	Metric	U.S.
	kg/m	lbs/feet
Capacity	6.000	13.228
Lifting height	8,10	26,6
Forward reach	4,80	15,7
Fork length	2,00	6,6
Width of carriage	2,00	6,6
Closed height	2,45	8,0
Telescopic type	Single boom	
Wheels front	Single mounted, 18,5-R22 pneu	
Wheels rear	Single mounted, 18,5-R22 pneu	
Engine	Perkins 1104.44 Turbo Intercooler 132 hp	
Transmission	Hydrostat 2 speed	
Hydraulic	Rexroth joystick	
Seat	Resilient health seat	

Equipment Manitou steel closed cabin equipped with:

Windscreen wipers
Heater
Safety glass
Radio
Aircon

Frame Levelling 10/10 on front axle

Light equipment consisting of:

Complete roadlight

3 extra worklight - 2 front and 1 rear mounted on cab

Cyclon prefilter for desert operation

Safety

Safety belts
Fire extinguisher
First aid kit
Flashing yellow safety light
back up horn

**ELM powered adjustable forks type SIGGS7020
(hydraulic sideshift/forkpositioner)**

warranty 12 months 100% on parts or 2000 hours

Operators and Parts manuals in English