



2006  
**GMC**



**ENVOY**  
**GMC**

**2008 ENVOY**  
FEATURES | SPECIFICATIONS



## ENVOY STANDARD FEATURES



Envoy SLT shown

### SAFETY

Head-curtain side air bags<sup>1</sup> with rollover protection

Tire pressure monitoring system<sup>2</sup>

OnStar<sup>®</sup> with one-year Safe & Sound Plan<sup>3</sup>

Driver and right front passenger frontal air bags with Passenger Sensing System<sup>1</sup>

Child security locks

PassLock<sup>®</sup> theft-deterrent system

StabiliTrak<sup>®</sup> Stability Control System with Traction Control

### EXTERIOR

Electric release liftgate with liftglass

Dual halogen headlamps

Daytime running lamps

Halogen fog lamps

Front and rear intermittent wipers

Black roof-mounted luggage-rack side rails

Power-adjustable rearview mirrors

17-inch aluminum wheels

Chrome bodyside molding

### INTERIOR

AM/FM stereo with CD Player and six speakers

XM<sup>®</sup> Radio<sup>4</sup> with 3 trial months of service

Manual dual-zone air conditioning

Leather-wrapped steering wheel

Floor console with CD storage

Electric rear window defogger

Power windows and door locks

Cruise control

Remote keyless entry

Deluxe cloth seating

Front-reclining bucket seats

Split-folding rear seat

Cargo tie-downs in rear compartment

### MECHANICAL

Vortec<sup>®</sup> 4.2L I-6 Engine with 285 hp and 276 lb-ft torque

Trailer Equipment

Luxury Ride Suspension

## DENALI STANDARD FEATURES



Envoy Denali shown

Includes lower trim level features with these enhancements

### EXCLUSIVE APPOINTMENTS

Leather-wrapped steering wheel with wood accents

Leather-wrapped center console shifter

Signature chrome Denali honeycomb grille

Body-color bodyside molding

Exclusive front and rear fascias

### EXTERIOR

Integrated body-color assist steps

18-inch high-polished aluminum wheels

Body-color outside rearview mirrors with integrated turn signals

### INTERIOR

Bose<sup>®</sup> Premium Audio System

Power adjustable pedals

First- and second-row leather seating surfaces with 8-way power adjustability and power lumbar support for driver and front passenger

Rear reversible cargo mat

Cargo net

Cargo shade

### MECHANICAL

Vortec 5.3L V-8 Engine with 300 hp, 321 lb-ft torque and Active Fuel Management<sup>™</sup>

Heavy-duty, Eaton<sup>®</sup> Locking Rear Differential

Load-leveling Rear Suspension Package

<sup>1</sup>Always use safety belts and the correct child restraints for your child's age and size. Even in vehicles equipped with a Passenger Sensing System, children are safer when properly secured in a rear seat in an appropriate infant, child or booster seat. See your Owner's Manual for more safety information. <sup>2</sup>Does not monitor spare. <sup>3</sup>Call 1-888-4ONSTAR (1-888-466-7827), and visit onstar.com for system limitations and details. <sup>4</sup>Available in the 48 contiguous United States. Required \$12.95 monthly subscription sold separately after three trial months. All fees and programming subject to change. Subscription subject to customer agreement. For more information, visit gm.xradio.com.

## ENVOY TRIM LEVELS

### SLE-2 TRIM

Includes standard features with these enhancements:

- ▷ Custom overhead console
- ▷ Inside auto-dimming rearview mirror with compass and outside temperature displays
- ▷ 8-way power driver-seat adjustability with power lumbar support
- ▷ Padded, color-keyed visors with lighted vanity
- ▷ Roof-mounted luggage rack with crossbars
- ▷ Heated, power-adjustable outside rearview mirrors
- ▷ Universal Home Remote

### SLT STANDARD FEATURES

Includes lower trim-level features with these enhancements:

- ▷ Rear audio controls with headphone jacks (headphones not included)
- ▷ Bose Premium Audio System
- ▷ Automatic dual-zone air conditioning
- ▷ Driver Information Center (DIC)
- ▷ Leather-wrapped steering wheel with audio and DIC controls
- ▷ Leather-appointed front bucket seats
- ▷ Heated driver and front passenger seats
- ▷ Two-position memory for driver's seat
- ▷ 8-way power adjustability for front passenger seat
- ▷ Heated power-adjustable rearview mirrors with integrated turn signals
- ▷ Inside auto-dimming rearview mirror with 8-point compass display
- ▷ Alarm system
- ▷ Headlamp washers

## OPTIONS

### SAFETY, COMFORT AND CONVENIENCE

	SLE-1	SLE-2	SLT	DENALI
Power adjustable pedals	—	A	A	S
Sunroof	—	A	A	A
Smoker's Package, includes ashtray and lighter	A	A	A	A
Cargo convenience package, including cargo convenience net, reversible rear cargo mat and retractable rear cargo shade	A	A	A	S

### AUDIO AND ENTERTAINMENT

AM/FM Stereo with 6-Disc CD Changer	—	A	A	A
AM/FM Stereo with CD player and Touchscreen Navigation Radio <sup>1</sup>	—	—	—	A
Bose Premium Audio System	—	A	S	S
Rear seat entertainment system with DVD player	—	A	A	A

### SEATING

Front leather-appointed bucket seats	—	A	S	—
8-way power-adjustable passenger seat (on SLE-2, requires leather-appointed buckets seats)	—	A	S	S

### EXTERIOR

Black adjustable rooftop luggage rack with crossbars	A	S	S	S
Assist Steps (black on SLE and SLT; body color on Denali)	—	A	A	S

### MECHANICAL

Heavy-duty, Eaton Locking Rear Differential	—	A	A	S
Engine block heater (4WD models only)	A	A	A	A

S=Standard, A=Available, — = Not Available

<sup>1</sup>Map coverage not available in Puerto Rico, the Virgin Islands, and portions of Canada.

## ENVOY COLOR



DARK CRIMSON METALLIC<sup>1</sup>



MEDIUM BROWN METALLIC<sup>1</sup>



SUMMIT WHITE



STEEL GRAY METALLIC



MIDNIGHT BLUE METALLIC<sup>1</sup>



ONYX BLACK



RED JEWEL TINTCOAT Extra-cost color



CARBON BLACK METALLIC Extra-cost color



SILVER MIST METALLIC

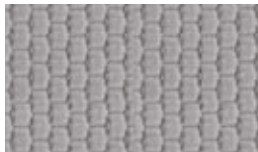


LIQUID SILVER METALLIC

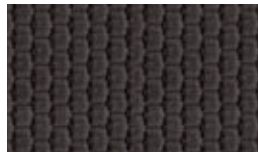
## ENVOY INTERIOR

1. LIGHT GRAY CLOTH
2. EBONY CLOTH
3. LIGHT GRAY LEATHER
4. EBONY LEATHER

1



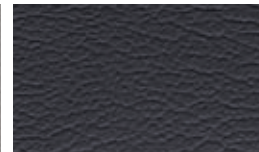
2



3



4



<sup>1</sup>Not available on Envoy Denali.

## ENVOY WHEELS/DIMENSIONS

ENGINE	VORTEC 4.2L I-6 INLINE 6-CYLINDER	VORTEC 5.3L V-8
Capacity	4.2L	5.3L
Bore and stroke (mm)	93 x 102	96 x 92
Compression ratio	10.3:1	9.9:1
Valve train	Double-overhead cam with four valves per cylinder	Overhead valve with two valves per cylinder
Fuel delivery	Sequential fuel injection	Sequential fuel injection
SAE net horsepower @ rpm	285 @ 6000	300 @ 5300
SAE net torque @ rpm (lb-ft)	276 @ 4600	321 @ 4000
Transmission	4L60 Hydra-Matic® 4-speed automatic with overdrive	4L60 Hydra-Matic 4-speed automatic with overdrive
Drive	2WD 4WD with Autotrac (available)	2WD 4WD with Autotrac (available)

EPA ESTIMATED MILEAGE PER GALLON	VORTEC 4.2L I-6	VORTEC 5.3L V-8
Envoy 2WD/4WD	14 city 20 hwy/14 city 20 hwy	(Engine not available)
Envoy Denali 2WD/4WD	(Engine not available)	14 city 20 hwy/13 city 19 hwy

### STANDARD TECHNICAL DATA

Brakes	Vented 4-wheel discs with Antilock Braking System
Steering	Hydraulic power-assist rack-and-pinion system
Fuel tank capacity (approx gals)	22.0
Battery (cold cranking amps)	Delco® Freedom® (600)
Alternator (amps): Envoy/Envoy Denali	150/145

## ENVOY WHEELS

### 1. SLE-1: STANDARD

17-inch deluxe aluminum wheel with six-spoke design

### 2. SLE-1: OPTIONAL, SLE-2: STANDARD

17-inch high-polished aluminum wheel with six-spoke design

### 3. SLT: STANDARD

18-inch high-polished aluminum wheel with six-spoke design



### GROSS VEHICLE WEIGHT RATING¹ (GVWR)

Envoy (2WD/4WD)	5550/5750 lbs
Envoy Denali (2WD/4WD)	6001/6001 lbs

### TRAILERING DATA

	VORTEC 4.2L I-6		VORTEC 5.3L V-8	
	Axle Ratio	Max. Trailer Weight² (lbs)	Axle Ratio	Max. Trailer Weight² (lbs)
Envoy 2WD/4WD	3.42	5300/5200	(Engine not available)	(Engine not available)
Envoy Denali 2WD/4WD	3.73	5800/5700	(Engine not available)	(Engine not available)
			3.42	6100/6000
			3.73	6600/6500

### EXTERIOR DIMENSIONS

Overall Height	71.9"
Overall Width	74.7"
Overall Length	191.6"
Wheelbase	113.0"

### CARGO AREA DIMENSIONS

Maximum Volume	80 Cu Ft³
Cargo Floor Length (behind first-row seats)	70.0"
Inside Cargo Width (between wheel housing)	46.1"

## ENVOY DENALI WHEELS & INTERIOR TRIM

### 1. DENALI: STANDARD

18-inch high-polished aluminum wheel with nine-spoke design

### 2. 2WD DENALI: OPTIONAL

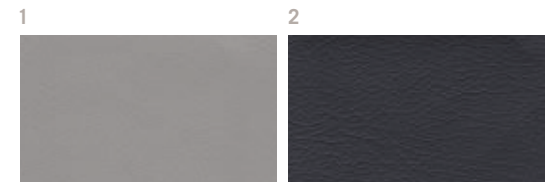
20-inch polished aluminum wheel with six-spoke design

Interim availability. Use only GM-approved wheel/tire combinations. See your dealer for details.



### 1. LIGHT GRAY LEATHER (282)

### 2. EBONY LEATHER (482)



¹When properly equipped; includes weight of vehicle, passengers, cargo and equipment. ²Maximum trailer ratings are calculated assuming a base vehicle, except any options necessary to achieve the rating, plus driver. The weight of optional equipment, passengers, cargo and required trailering equipment will reduce the maximum trailer weight your vehicle can tow. See your dealer for details. ³Cargo and load capacity limited by weight and distribution. Maximum length measured at top of seat back.